



STAHLWASSERBAU BEESKOW GMBH

Hydraulic steel structures
Conveyor technology and mechanical engineering
Industrial service



Stahlwasserbau Beeskow – the one-stop provider for the full range of services

History

Since our company was founded, we have achieved many exciting milestones. Our company started off with conveyor technology, which today is combined with industrial service in one of our company's two business divisions. Our activities now focus on hydraulic steel structures.

Today's company name Stahlwasserbau Beeskow stands for excellence based on 85 years of experience and which began with the takeover of a hydraulic steel structure company from Lower Saxony in the early nineties. Today, we are now performing maintenance in connection with many of the first projects completed back then. Our expertise and high level of competence set us apart in our industry.

Engineering firm

Our own engineering office has continually proven to be a decisive advantage offered to our customers. After all, every system we build, overhaul or maintain is one-of-a-kind and requires individual solutions.

That's why we assign you your very own project engineer to give you an in-depth consultation and serve you for the entire duration of the project. Whether designs, record drawings, structural analyses or production documents – a high degree of flexibility and short turnaround time, we are capable of devising complete solutions. Our sophisticated engineering expertise and professional stress analysts will win you over from the very beginning.



You can view current job openings and interesting news on our online news page so you're always up-to-date.



KORROSIONSSCHUTZ GMBH Mansfeld

Tel. (03 35) 41 01 20
Fax (03 35) 41 01 22
Korrosionsschutz@t-online.de
Birnbbaumsmühle 3-4
15234 Frankfurt (Oder)

- Betonsanierung
- Industriefanstrich
- Fassadenanstrich
- Strahlentrostungen
- Dampfstrahlreinigung
- Brandschutzbeschichtungen

Redefining the manufacturing process

Our production process that relies on highly qualified, experienced skilled workers realises the planned systems on-time and in outstanding quality. Our multi-shift rotation and integrated mechanical production facility complete with CNC equipment ensure that we are able to realise solutions, even those with short turnaround times.

In many cases, this gives us a decisive competitive advantage since we have the necessary capacities and skilled personnel – also when it comes to engineering services – for executing first-class projects with short turnaround times.

Overhauling – experience meets crafted quality

Our experienced professionals deliver outstanding quality based on their dedicated work ethic. The systems we overhaul don't just weather the first storm, they continue to remain in top form over the long term thanks to the tried and tested approach taken by SWB. Overhauling is a

cost-efficient, in some cases more technically sophisticated solution that we offer especially with respect to environmental friendliness, the preservation of resources or even monument protection.

Installation, maintenance, repairs and service directly on location

Our experienced team installs the systems we manufacture directly on location – not just across Germany, but also abroad.

Proper maintenance and repairs guarantee a long life-cycle for your system. Our installation and repair teams reliably perform system shutdowns, on-site repairs or manufacture replacement parts (including CNC mechanics) directly at our plant. As a full-service provider, we repair your systems quickly and affordably.

As Stahlwasserbau Beeskow GmbH stands for sophisticated engineering, reliable work performed by top engineers and qualified professionals, we have earned ourselves a reputation as a reliable, competent partner over the decades. Try us and experience the difference!

Sincerely, your team at SWB

Our certifications

We are very proud to have been awarded certification in accordance with DIN EN 1090 – EXC 4 by TÜV in September 2013.

For many years, Stahlwasserbau Beeskow GmbH has been in possession of the advanced welding fitness certificate in accordance with DIN EN 18800. In May 2013, our company was awarded pre-qualification in accordance with sec. 6 b of the German Construction Contract Procedures (VOB).



Kompetenz Nachhaltigkeit Ästhetik

Sika schützt Ihre Werte –
mit leistungsfähigen Beschichtungssystemen.

Sika Deutschland GmbH Industrial Coatings

Rieter Tal · 71665 Vaihingen/Enz · Telefon (07042) 109-0 · Telefax (07042) 109-180 · www.sika.de

BUILDING TRUST



We move water your way – Stahlwasserbau Beeskow

Intelligent, sustainable water regulation solutions

Intelligent planning, a sustainable mindset and outstanding engineering expertise are essential when it comes to hydraulic steel structures. The long-term functioning of a system is based on close cooperation with our customers such that the design and function of the system are aligned with the customer's wishes and the conditions specific to the respective water body.

A broad range of aspects must be considered when developing solutions for the operators of our systems. No decision may be made lightly in this respect. That's why we manufacture one-of-a-kind systems.

Our sophisticated technical equipment and the expertise accumulated from the production of several hundred systems clearly sets us apart from the competition. We greatly respect both the natural world and the primordial element water. That's why we strive to enhance the environmental soundness of our methods, sustainable designs and maintenance.

Our service portfolio for hydraulic steel structures

- Sluices
- Overhaul gates
- Rolling, sliding and segment gates
- Retarding gates
- Flood protection gates
- Screens and screen cleaning machines
- Construction of new systems and overhauling
- Engineering services (planning, configuration, design, structural analysis)



Erfahrung in Entwicklung und Herstellung von Hydraulikanlagen ist Basis für den Stahlwasserbau



www.zs-zylinder.de



Engagement im Stahlwasserbau

Konstruktion und Herstellung von Hydraulikzylindern, Aggregaten, Steuerung inkl. Montage und Wartung, Verschlauchung und Verrohrung auf der Baustelle

Services

SLUICES



Sluices are engineered structures that make it possible to raise and lower a ship on a barrage to overcome the difference in water levels caused by a dam. A wide variety of different gates are used to close off sluice chambers.

RETARDING GATES

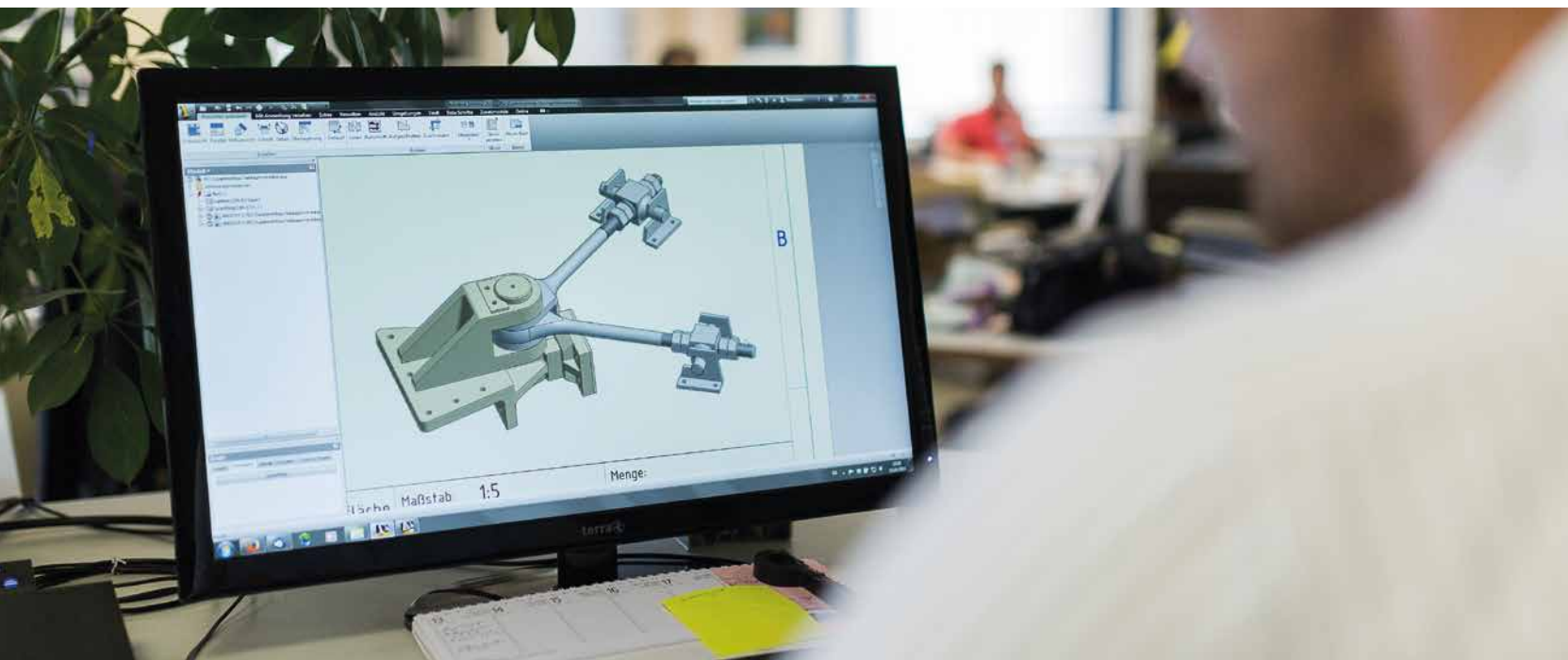


Retarding gates are regulating devices often used downstream of hydroelectric dams to headwater level.

FLOOD PROTECTION GATES



Technical system parts (in most cases, made of steel) for protecting against flooding; in general, they serve as a water-tight closure for certain sections of road e. g. under bridges or behind protective walls in the event of flooding.



Seit 15 Jahren zuverlässiger und leistungsstarker Partner für Industrie / Handwerk im Bereich der Arbeitnehmerüberlassung und Personalvermittlung:

Den hohen Anforderungen unserer Partner begegnen wir mit speziell ausgewählten, zuverlässigen, gut qualifizierten und motivierten Mitarbeitern. Darüber hinaus bieten wir sowohl unseren Kunden, als auch unseren Mitarbeitern ein außergewöhnliches hohes Maß an Ausstattung und Organisation. Damit sorgen wir für höchste Produktivität und Zufriedenheit ab der ersten Stunde.

Wir bieten Arbeitskräfte im gewerblich-technischen Bereich (regional / Montage):

z.B.: Schlosser, Schweißer, Monteure, Elektriker, Mechatroniker, Betriebsschlosser, Werkzeugmacher, Maler / Lackierer, Industriereiniger, auf Wunsch ausgestattet mit Grund- und Spezialwerkzeug und (Montage-) Fahrzeug

**Scharm & Kowatsch Personalservicegesellschaft mbH; 15890 Eisenhüttenstadt, Werkstrasse 22
Tel. 03364 – 73 32 66 / Fax: 03364 – 73 32 41; E-Mail: info@psg-ehst.de; Website: www.psg-ehst.de**

Services

SCREENS AND SCREEN CLEANING MACHINES



A screen is a hydraulic steel structure that is generally allocated at the intakes upstream of mills or hydroelectric power plants in order to collect debris and prevent damage to downstream turbines.

The screen cleaning machine that removes debris that has collected upstream of the screen. This prevents the screen from becoming plugged.

GUARD GATES FOR DAMS



Dams are equipped with discharging equipment for managing the accumulated water and draining the basin.

They consist of pipes and guard gates. In most cases, the pipes run under the dam or through the dam wall to the valley side.

SEGMENT GATES



Segment gates are used to precisely control water volumes in the event of high pressures exerted by the impounded water. The principle of load bearing permits operation with minimal positioning forces and consequently low driving power.

SLIDING AND ROLLING GATES



Gates are used for applications from basic retaining dams along rivers to a shut-off gate in hydroelectric power stations up to and including water regulation gates in dams. Basic or double gate structures are used in weir structures. We manufacture vertical gates as sliding or rolling gates from steel, stainless steel or wood.

OVERHAUL GATES



Stop logs are hydraulic steel structures for stopping the water streams of water upstream of sluices or hydroelectric power plants. They serve to shut off water streams in preparation for overhauling of structures, for which reason they are often referred to as revision gates.

PUMPING STATIONS



A pumping station is a water management system used to pump water out of a low-lying area, also referred to as a polder, to a higher water body. This type of water regulation can be used to effectively protect the low-lying area against flooding; it can also be used for development, agriculture and traffic infrastructure applications.



Rock-hard references



BEVENBURG RESERVOIR

- Retarding gate with central hydraulic drive
- Inner width: 13.00m
- Damming height: 4.50m
- Heated sliding walls made of 1.4301 stainless steel



HWS HAMBURG - NIEDERBAUMBRÜCKEN (BRIDGES)

- 3 sliding gates with an electro-mechanical drive
- Dimensions of gate 1: 24.40m x 1.34m
- Dimensions of gate 2: 13.20m x 1.42m
- Dimensions of gate 3: 16.50m x 1.41m



HWS DRESDEN

- 3 sliding gates with an electro-mechanical cable winch system
- Dimensions of gate 1: 20.85m x 2.19m
- Dimensions of gate 2: 23.85m x 2.99m
- Dimensions of gate 3: 31.00m x 0.60m



SAULGRUB WEIR GATE

- 5 vertical gates with a hydraulic drive
- Dimensions: 3.30m x 3.30m
- 1 retarding gate with a hydraulic drive
- Dimensions: 6.20m x 1.87m
- 1 three-piece revision gate with lifting beam



HOHENZAATEN WEIR

- 3 rolling gates with an electro-mechanical chain drive
- Dimensions: 8.00m x 3.00m each
- 6 walkways and drive webs



TÖGING POWER STATION

- Replacement of the turbine intake screen
- Total length: 103.00m
- Height: 9.30m
- With support structure
- Galvanised finish



BEESKOW SLUICE

- Construction of new mitre gates with filling gates
- Inside chamber width: 5.34m
- Gate height: 4.10m
- Drive with electronic lift cylinder



INGELHEIM POLDER

- 2 retarding gates with single-side hydraulic drive via torque tube
- Inside width: 13.50m
- Damming height: 3.00m
- Sliding walls made of 1.4571 stainless steel



ALLER CASCADING DAM SPILLWAY

- RMG 29 fully automatic screen cleaning machine
- Track length: 17.40m
- Gripper width: 1.10m
- Including PLC control unit

outokumpu



Plate Service Centre

Mail: psc.germany@outokumpu.com

Telefon: 0049 2151 83 2734

Fax: 0049 2151 83 2790

Wasserstrahl
Laser
Plasma

Weitere Möglichkeiten
auf Anfrage



Mech. Bearbeitung
Drehen / Fräsen
Bohren

Weitere Möglichkeiten
auf Anfrage



Outokumpu Plate Service
Centre Group
führende Plate Service
Center Europas

outokumpu.com/psc-group



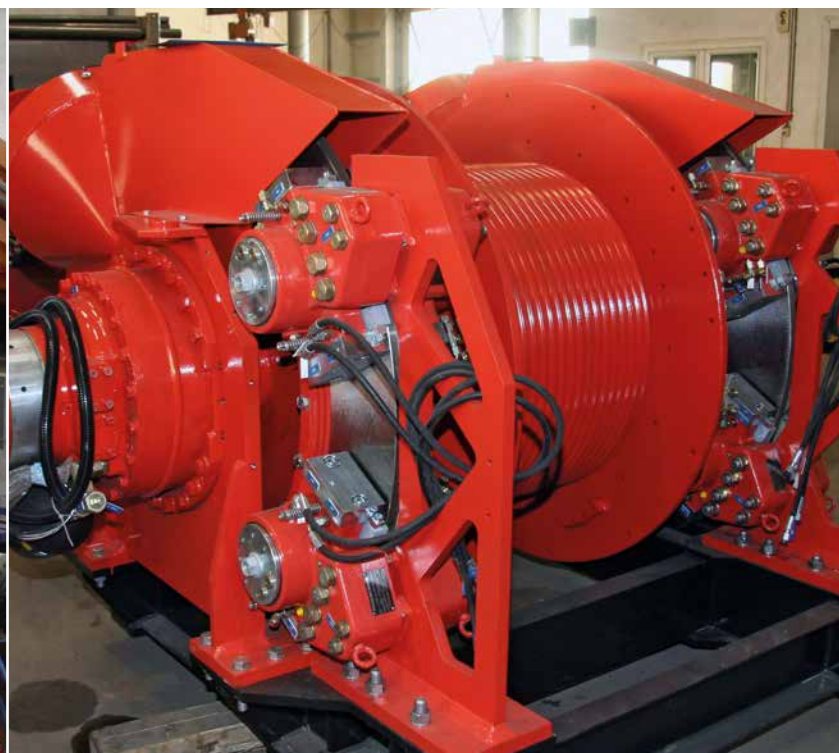
Getting things moving – conveyor technology and mechanical engineering from SWB Beeskow

Our company started off serving various industries as a conveyor technology provider. As a result, we have a thorough understanding of the needs of the construction and wood-working industries, recycling sector and renewable energies industry.

Our expertise and commitment to our work ensure that pumped media reach their destination on-time and according to plan. We accompany you from the initial design, planning, production up to and including installation. We offer a comprehensive service package. We are happy to supply you with replacement parts or maintain and overhaul your facilities in a professional and reliable manner.

We manufacture

- screw conveyors for a wide range of bulk materials and media for
 - the wood-working industry
 - recycling plants
 - power and heating plants
 - construction material industry (cement, gravel...)
 - purification plants (e. g. transport of sewage sludge)
- Screw diameter: from 100 to 1,000 mm
- Screw length of up to 12,000 mm
- Single and twin screws
- Open trough with cover or pipe trough
- Troughs and helixes made of standard steel, Stainless steel or wear-resistant steel
- Standard and special configuration according to customer needs



Products

SCREW CONVEYORS



Screw conveyors are perfect for all transport and extraction applications involving a limited conveying distance. The conveyors are robust and durable, offer reliable operation and low-maintenance. They offer numerous advantages thanks to their enclosed cavity and/or material and pressure tightness for sensitive areas.

TROUGH CHAIN CONVEYORS



Trough chain conveyors can be used for a wide range of transport applications, from fine to chunky bulk materials. Further advantages of the trough chain conveyor are its compact, enclosed construction, absence of dust and dirt contamination and predominantly low-impact transport of material.

BELT CONVEYORS



Belt conveyors offer cost-efficient conveying for a wide range of bulk materials at high feed rates for long and short distances. The endless conveyor belt used as a transport means is allocated on rollers for operation with relatively low power consumption, very low noise and minimal wear.

FEED AND DISCHARGE CONVEYORS



Feed stations are used for the retrieval, storage and dosed discharge of bulk materials in discontinuous processes. The feed stations can be directly supplied by lorry, rail car or wheel loader, but also by other handling equipment.

DISC SORTERS



Disc sorters are mainly used to sort oversize particles out of an unclassified flow of bulk materials. They are used to protect downstream system parts from large impurities or to separate materials into fractions with a larger grain size.



Sustainability

For us, sustainable use of scarce resources is something we take to heart. That's why we installed a solar power array on the roof of our head office to cover a large portion of the energy used by our company.



ADE - ELEKTRO - HUBZYLINDER Elektromechanische Antriebe für Schleusen- und Wehranlagen



ADE-WERK GmbH
77652 Offenburg
Tel.: +49 (0) 781 / 209-0


E-Mail: info@ade.de
Internet: www.ade.de

Leistungspotential der Hydraulik verbunden mit

- minimalem Montageaufwand
- minimalem Wartungsaufwand
- kompakter Bauweise
- Umweltfreundlichkeit
- hohem Wirkungsgrad
- integrierten Federpakete

Zahlreiche Referenzen im Bereich Stahlwasserbau dokumentieren unseren hohen Standard.

Wir bieten Ihnen kundenspezifisch optimale und kostengünstige Lösungen.



**Systempartner
für Hydraulik**

Gemeinsam mit unseren Kunden entwickeln wir innovative Lösungen der Antriebs- und Steuerungstechnik, im Maschinen-, Anlagen-, Stahlwasserbau oder für explosionsgefährdete Bereiche. Wir bieten alle Dienstleistungen aus einer Hand: von der Planung, Konstruktion, Montage und Inbetriebnahme bis hin zur Wartung bei unseren Kunden vor Ort - persönlich, schnell und zuverlässig.

WILLMANN Steuerungstechnik GmbH
Karl-Friedrich-Benz-Str. 2-4
49377 Vechta
Tel.: +49 4441 93040
info@willmann-hydraulik.de
www.willmann-hydraulik.de

WILLMANN
Hydraulische Steuerungstechnik
Ein Geschäftsbereich der HANSA-FLEX AG

epm ELEKTROTECHNIK



Ihr Spezialist für Automatisierungstechnik, wir konstruieren und fertigen automatische Steuerungsanlagen für:

- Rechenreinigungsanlage
- Klärwerke
- Schleusen
- Abwasserpumpwerke
- Schöpfwerke
- Schiffshebewerke



epm elektro-planung-montage GmbH
Lodberger Str. 6 • D-49624 Lönigen
Tel: 0049-5432-1288 • Fax: 0049-5432-1231
E-Mail: info@epm-elektrotechnik.de



Emons Spedition GmbH
Birnbauersmühle 65 | D-15234 Frankfurt (Oder)
Tel. +49 335 869 495 17 | Fax +49 335 869 502 69

Disposition:
thilo.henschel@emons.de | mateusz.moder@emons.de
www.emons.de




Unsere Leistungen

- Internationale Teil- und Komplettladungen
- Schwertransporte
- Express- und Sonderfahrten
- Systemverkehre
- Zolldienstleistungen
- Zertifikate – AEO, ISO9001, SQAS



TEMPTON GROUP

Bewerben Sie sich noch heute!

GEMEINSAM NEUE WEGE GEHEN!

Als führendes Unternehmen im Bereich der Arbeitnehmerüberlassung und der Personalvermittlung stehen wir seit mehr als 10 Jahren unseren Kunden bei der Suche nach qualifiziertem Personal zur Seite.

Wir suchen und vermitteln:

- Schweißer 111/135/136/141
- Vorrichter/-ISO
- Heizungs-/Sanitär-Monteure
- Elektromonteure/Elektroniker
- Armaturenschlosser
- Konstruktionsmechaniker
- Lüftungsbau-Monteure
- Kälte-/Klimatechniker

TEMPTON Personaldienstleistungen GmbH
Niederlassung Cottbus
Karl-Liebknecht-Straße 6
03046 Cottbus
Tel.: 0355/3801470
cottbus@tempton.de
www.tempton.de

Contact

Stahlwasserbau Beeskow GmbH
Charlottenhof 13
15848 Beeskow

Tel.: (0 33 66) 50 13 - 0

Fax: (0 33 66) 50 13 99

info@swb-beeskow.de

www.swb-beeskow.de

